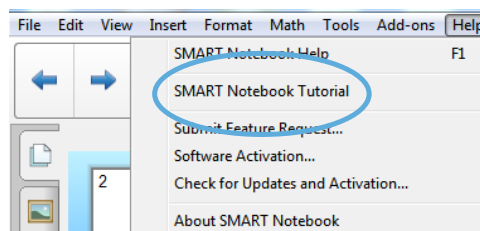


## Welcome to the SMART Notebook™ 14.1 collaborative learning software tutorial



Review features and get started quickly.

To access this tutorial later, go to



## Introducing SMART Notebook 14.1

SMART Notebook software is now faster and better than ever, with an intuitive math editing experience and support for more widgets and add-ons.





## New features in SMART Notebook 14.1

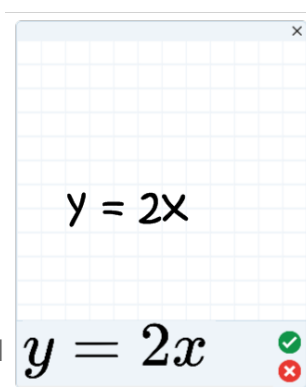
### Math editing

SMART Notebook 14.1 software introduces math editing. You can open the Math Editor by selecting the Insert Equation button from the Add-ons toolbar.



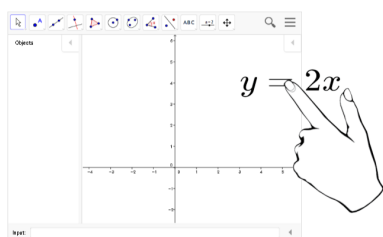
### To write an equation

Use any pen to write an equation inside the graph paper area. Your handwriting converts to a typed equation below the graph paper. Press the accept  button to insert the typed equation to your page, or the reject  button to cancel.



### To edit an equation

You can double-press or double-click the equation with the selection tool to open it in the Math Editor again. This allows you to edit your equation's original ink and make changes to the equation.



### To graph an equation

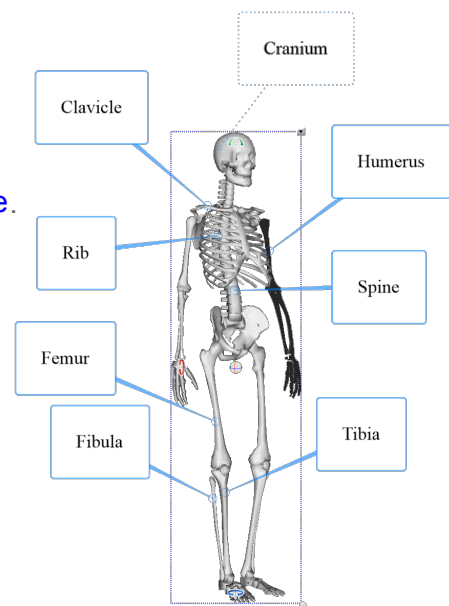
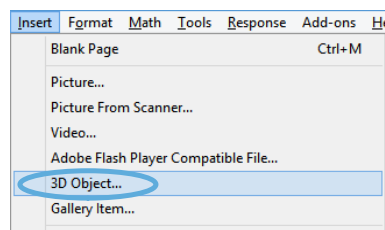
When you are done, you can also drag and drop the typed equation in a GeoGebra worksheet to be automatically graphed.

## New features in SMART Notebook 14.1

### Import SketchUp® (.skp) file type

SMART Notebook 14.1 software introduces the ability to import 3D objects in SketchUp format.

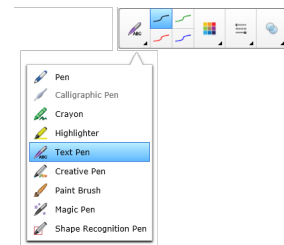
Download SketchUp files from the [Trimble® 3D Warehouse](#). You can also use SketchUp files you've created yourself. From Notebook, select the Insert → 3D Object menu item and select your SketchUp file.



# New features in SMART Notebook 14

## Ink editing

SMART Notebook 14 software introduces ink editing with the Text Pen. When you use the Text Pen to write notes, your handwriting is recognized and automatically converted to editable text. You can delete unwanted text by picking up a pen, and then drawing a strikeout line through the text. You can also apply other editing mark-ups to your text to insert spaces, insert text and even replace your text with new text.



To start, select the Text Pen on the toolbar, and then use the pen to write and mark-up your text on the display.

- **Replace text**

SMART Response  
Notebook

- **Insert text**

SMART <sup>software</sup>  
Notebook

- **Delete text**

SMART ~~SMART~~ Notebook

- **Insert space**

SMART | Notebook

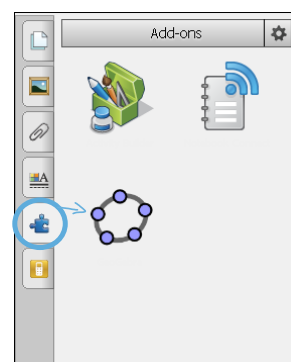
## New features in SMART Notebook 14

### GeoGebra widget

SMART Notebook 14 software now includes a GeoGebra widget that enables you to explore geometry, algebra, tables and more mathematics with your students.

You can also search for worksheets from GeoGebraTube using the keyword search. After searching for a worksheet, you can add it to your .notebook file. GeoGebraTube ([geogebraTube.org](http://geogebraTube.org)) contains thousands of worksheets created and shared by other teachers.

To start, press **Add-ons** and then press **GeoGebra**.

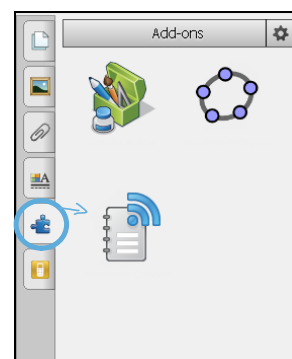


## New features in SMART Notebook 14

### Notebook Connect

Using the Notebook Connect add-on, you can access the latest articles and receive continuously updated headlines from your favorite publications. You can add, delete and manage feeds, view and bookmark articles and insert images and videos from the articles into SMART Notebook software to share with your class. You can also access the SMART Central RSS feed, which is included by default.

To start, press **Add-ons** and then press **Notebook Connect**.



## New features in SMART Notebook 14

### Cropping images

The object menu now includes a mask that you can use to crop raster images. When you apply the mask, the section of the image you crop is hidden instead of being deleted. This enables you to edit the mask if you want to crop a different section of the image. You can also unmask the image to restore the original image.

#### Try it!

1. Select the image of lions.
2. Press the image's menu arrow, and then select Mask.
3. Drag the image until only one lion appears in the cropping mask.  
You can also reshape the cropping mask by dragging one of its white circles.
4. Press anywhere outside of the image to crop it.

Tip: You can restore the original image by selecting the image, pressing the menu arrow and then selecting Unmask.

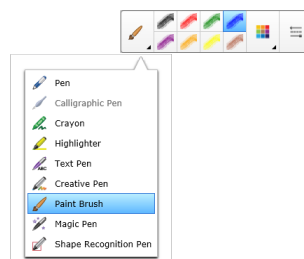
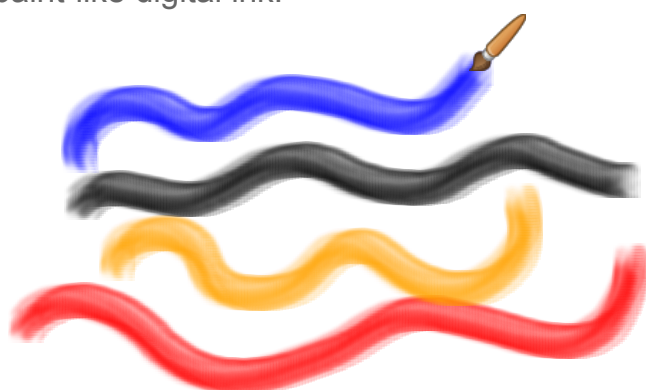




## New features in SMART Notebook 14

### Paint Brush pen style

SMART Notebook 14 software introduces a new pen type: Paint Brush. Using the Paint Brush pen type, you can write or draw paint-like digital ink.



## Write and draw

Pick up a pen and write

Press a pen color button on the pen tray to change the pen color.

Writing on your SMART Board® interactive whiteboard



### On-screen keyboard

Press the **Keyboard** button to launch the on-screen keyboard.



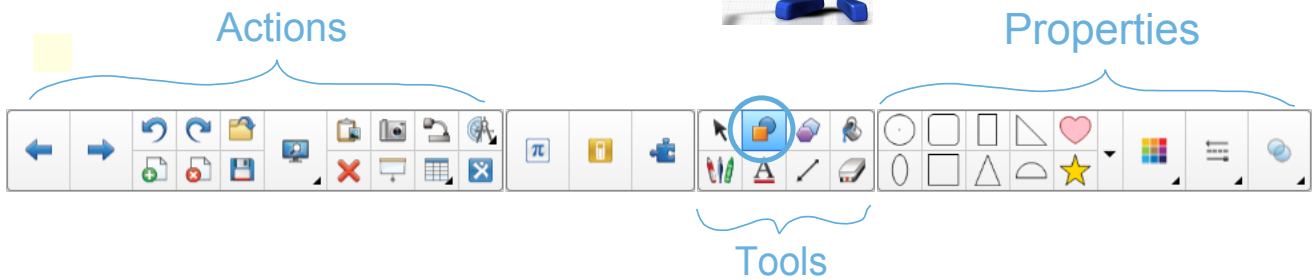
### Right-click

To make your next touch a right click, press the **Right-Click** button on the pen tray.

# Adaptive toolbar

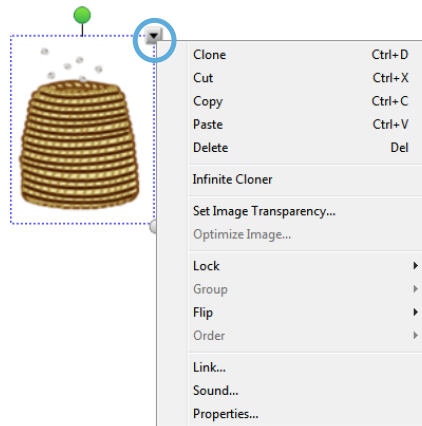
The toolbar provides shortcuts to commonly used actions, tools and properties. When you use the Select tool to select an object in the work area, its properties appear to the right of the tools group.

Press to reveal



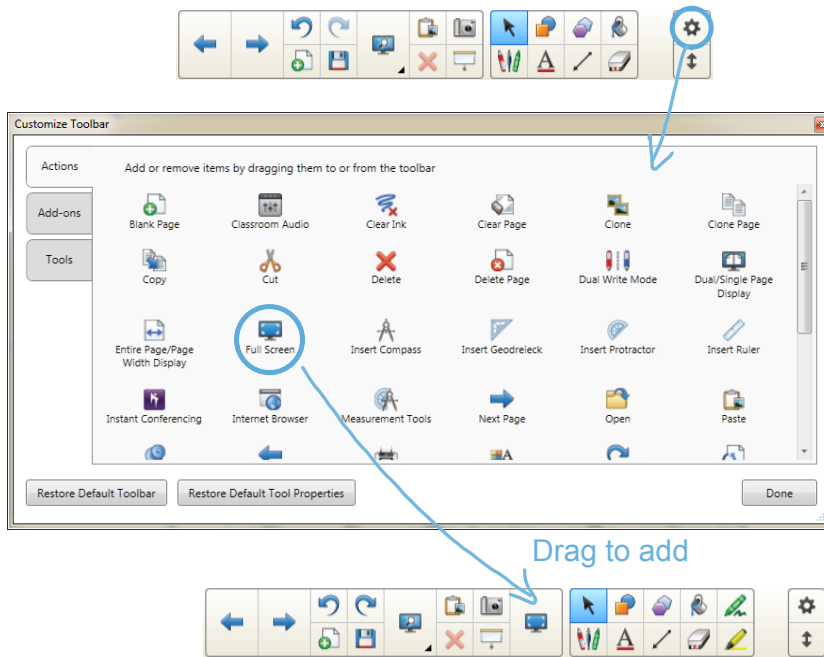
## Remember

You can still find additional properties in the Properties tab and in the object's drop-down menu.

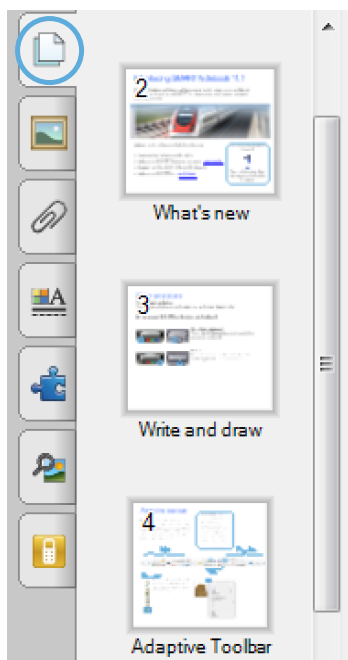


# Improved toolbar customization

Customize the toolbar so that the buttons you use frequently are only one click away.



# Pages

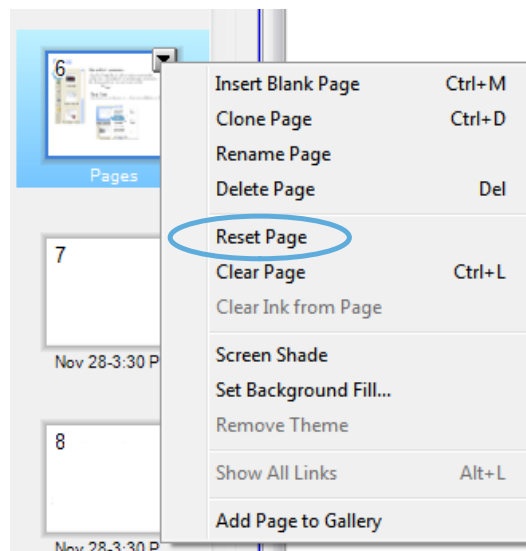


## See and sort your pages

Use the **Page Sorter** tab to jump to a page by selecting its thumbnail, or reorganize your pages by dragging them into a different order.

## Reset Page

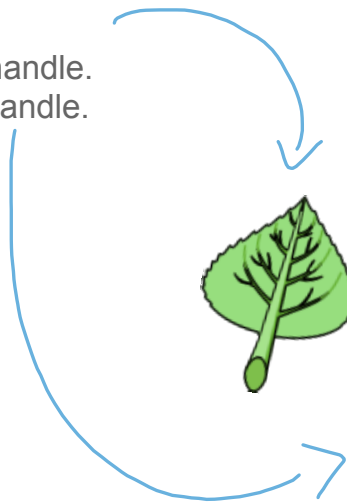
Easily reset your page to its **last saved state**, without reopening your lesson file.



## Objects

### Resize and rotate

Press the leaf to select.  
To rotate, use the green handle.  
To resize, use the white handle.

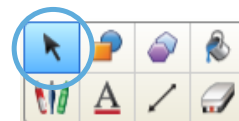


### Move objects

Press the leaf and drag it to  
move it around the page.

### Remember

To select an object, switch back to Select mode by  
putting down the pen and then pressing the **Select** icon.



## Text objects

### Add text

Click the **Text** button on the toolbar, and then click the work area to create a text box. Start typing.

You can format text using the buttons in the toolbar or the options in the Properties tab or the Format menu.

### Edit text

Double-click the text box to edit text.

### Resizing the text box

Drag the white handle to adjust the length of the text box and reflow the text inside.

Press to reveal



Try it here! Double-click the text to the left and use the white handle to adjust the text box.

## Gallery content



### Find content in the Gallery

Find images, videos, sound files, interactive activities, backgrounds and SMART Notebook pages in the Gallery. Just drag and drop to add them to your page.

### Add interactivity with the Lesson Activity Toolkit

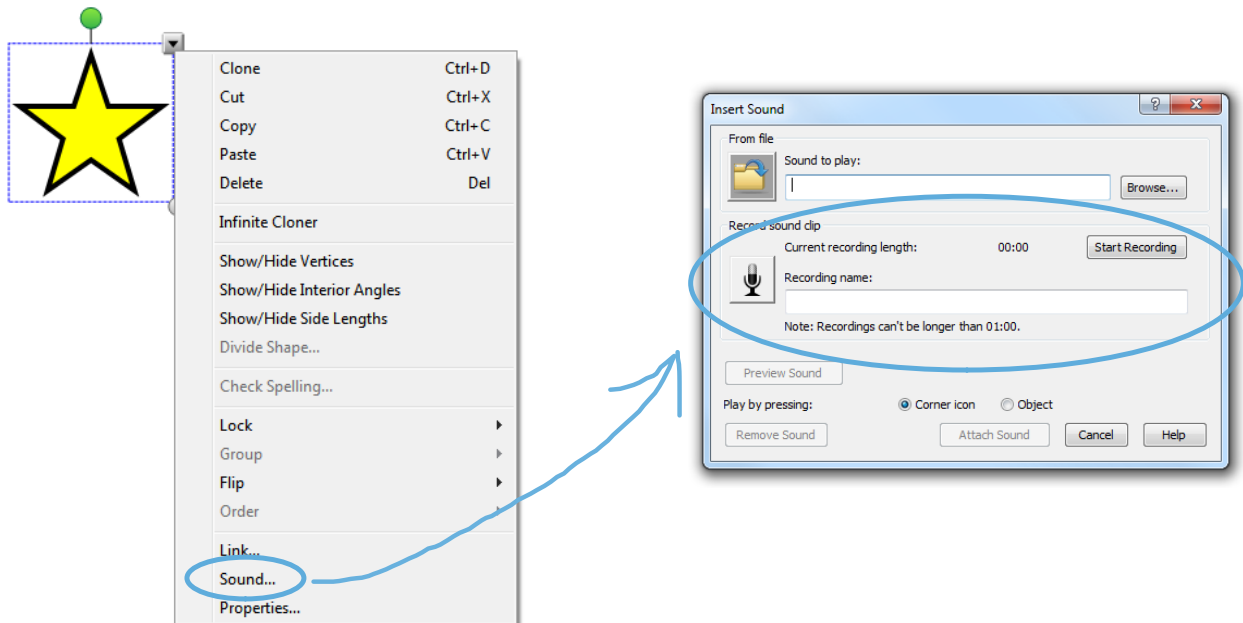
The Gallery tab also contains templates to help you create your own activities and engage your students with interaction.





## Sound recorder

Record a short sound clip to attach to an object on the page.

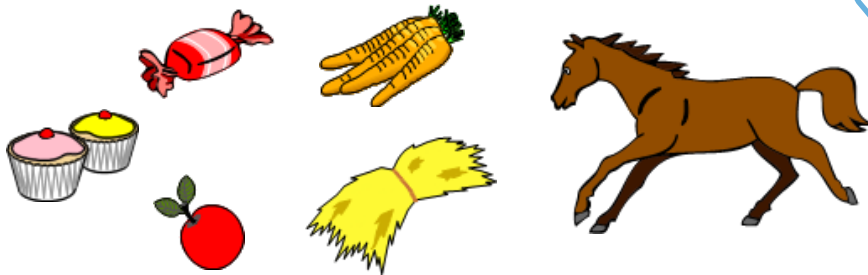


# Activity Builder

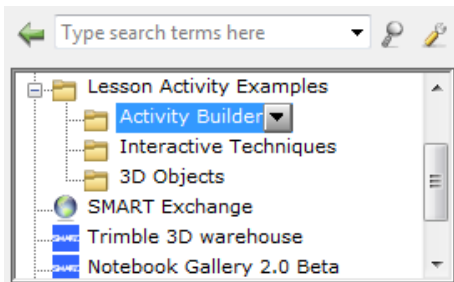
Create interactive lesson activities easily by using the Activity Builder. To start, click the **Add-ons** tab, and then click the **Activity Builder** thumbnail.

Try it

What do horses eat?  
*Drag and drop foods over the horse to feed it.*



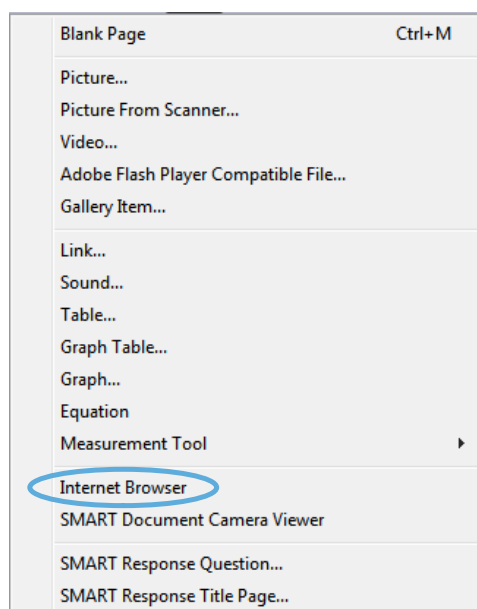
Use it in your class today



Need some inspiration? There are many more activity examples in the **Gallery**.

# Browser

Browse the Internet without leaving your SMART Notebook file.



Press to reveal



# Preferences

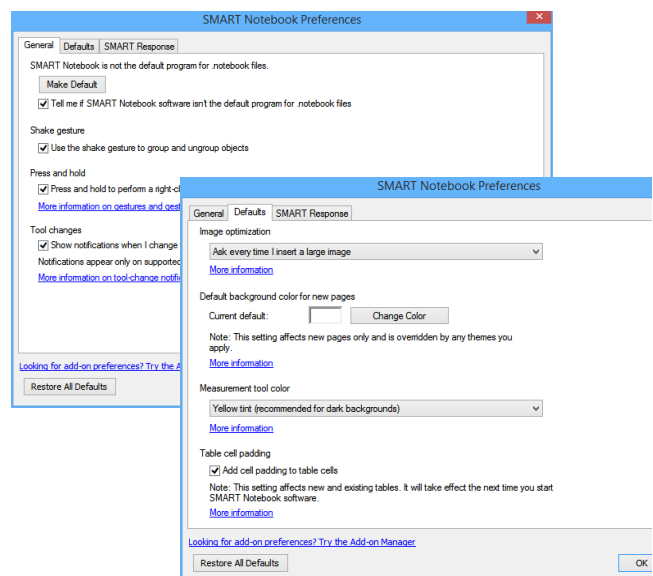
SMART Notebook Preferences gives you detailed control over your user experience.

Press to reveal



The customizable settings include the following:

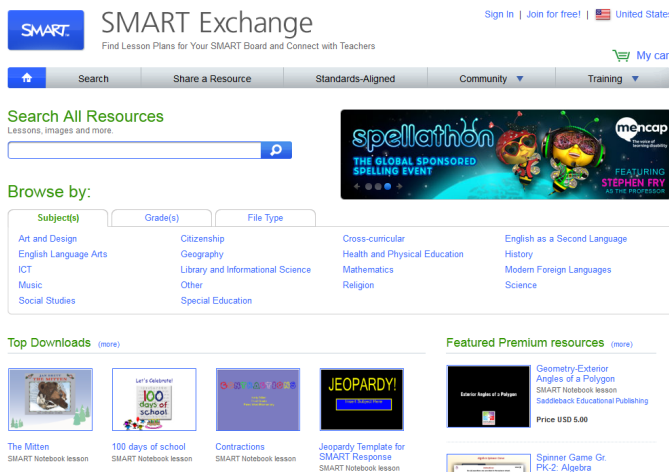
- Changing the default page background color.
- Enabling or disabling the shake gesture and the press-and-hold gesture.
- Changing the measurement tools' color.
- Adding or removing cell padding in tables.



Access SMART Notebook Preferences from **Edit > Preferences (Windows)** or **Notebook > Preferences (Mac)**.

# Download lessons


Download teacher-created lessons from the SMART Exchange™ website  
 Search by subject and grade. See what other teachers are trying and loving. Download and modify lessons to suit your teaching style.



[exchange.smarttech.com](http://exchange.smarttech.com)

Open the SMART Exchange website in your web browser or click the toolbar icon to go there directly.

## SMART Board interactive whiteboard

On the following pages, features with this  symbol are available only on SMART Board 800 series interactive whiteboards or certain other SMART hardware products.

Refer to your interactive product's specifications (available from [smarttech.com/support](http://smarttech.com/support)) to determine which features it supports.



For additional resources related to your SMART hardware product, visit [smarttech.com/training](http://smarttech.com/training).

## Gestures

Click the buttons to view the gestures.



## Using object awareness

### Work more naturally

The interactive whiteboard's cameras detect the size of your touch and assign different tools accordingly. This enables you to use your finger or pen to write or select, and your palm or fist to erase.

Click the box below to view object awareness in action.



Use the pen to write, your finger to drag and your palm to erase.

Try it here 

A video has been created to further explain the concept of object awareness and touch recognition here: <http://youtu.be/IBMdi1XM9mc>





## Lockable pen option

Play the video file to view the gesture.

If you want to use your SMART Board interactive whiteboard with a rolled up sock, Koosh® ball, tennis ball or pointer, enable the Lockable pen option.



Press and hold a pen color button until it flashes. This locks the interactive whiteboard so you can use any tool, not just your finger or pen, with the interactive whiteboard. Use your tool of choice to write, or press any toolbar tool to change the tool's function.

Press another pen color button to disable the Lockable pen option and go back to using your pen, finger and palm.



## Explore other SMART products

Click the products below to learn what's new and more!



SMART Ink

[Introducing SMART Ink!](#)



SMART Document Camera™



SMART Notebook Math Tools



SMART Table® collaborative learning center



SMART Response interactive response software

[What's new in SMART Response 2013](#)



SMART Sync™ classroom management software

## Now try it yourself



Start exploring and creating.

For additional help, tutorials or information on training sessions, use the Help menu or go to [smarttech.com/training](http://smarttech.com/training).

## Attachments

---

Tutorial for SMART Response 2013.notebook